

# What is the best diagnosis?

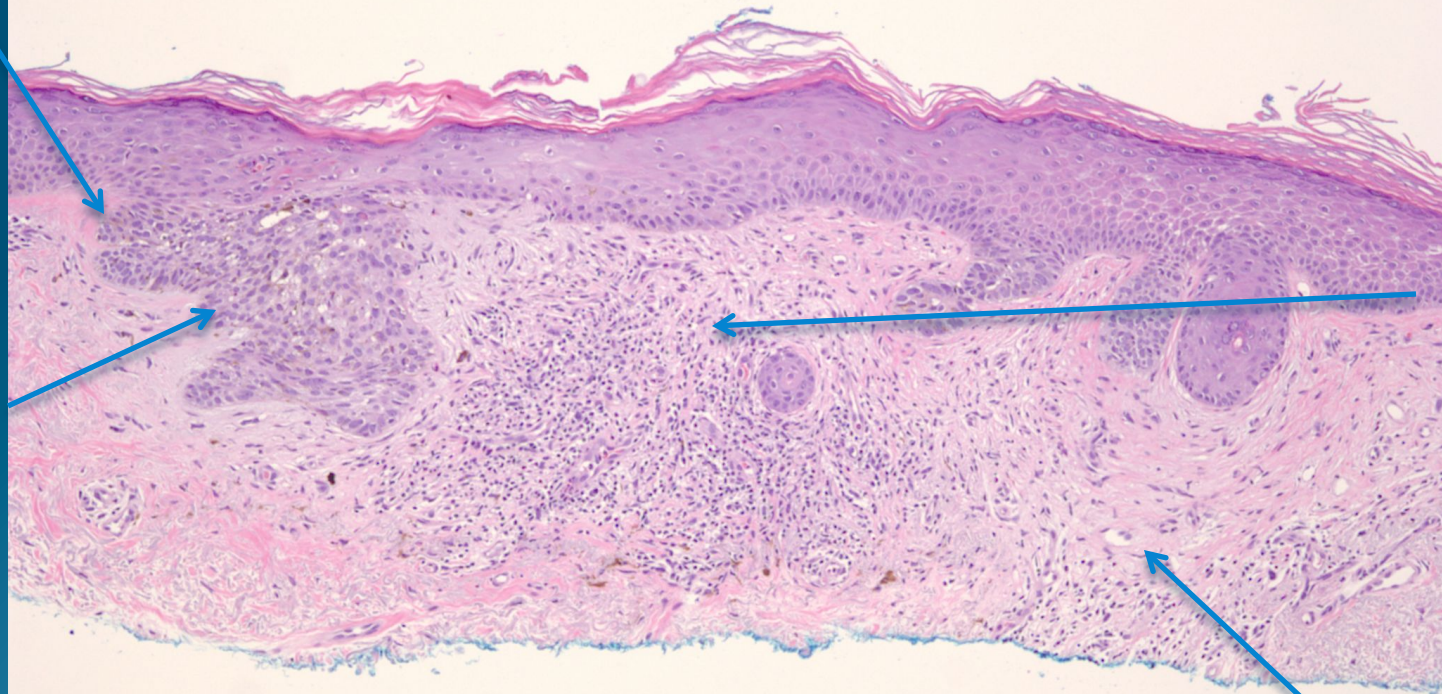
- A. Melanoma in situ
- B. Pigmented actinic keratosis
- C. Pigmented Bowen's disease
- D. Pigmented nodular hidradenoma
- E. Pigmented basal cell carcinoma

# Pigmented Superficial Basal Cell Carcinoma



Basaloid  
Cells  
attached  
To basal  
layer

Melanin  
pigment



Wiry  
Stroma  
With  
Chronic  
Inflamma-  
tion

Sun  
damaged  
skin